

68 Gleave Road Birmingham, B29 6JR

2026-2027

£92.26 per person per week! This large 5 bed student house in Selly Oak is just a 10 minute walk to University of Birmingham. The property comes fully furnished and briefly comprises of large open plan lounge/kitchen area, 3 bath/shower rooms, 5 spacious double bedrooms, and a well kept rear garden. Street parking available

Epc Rating - E

Council Tax Band: C (students exempt)

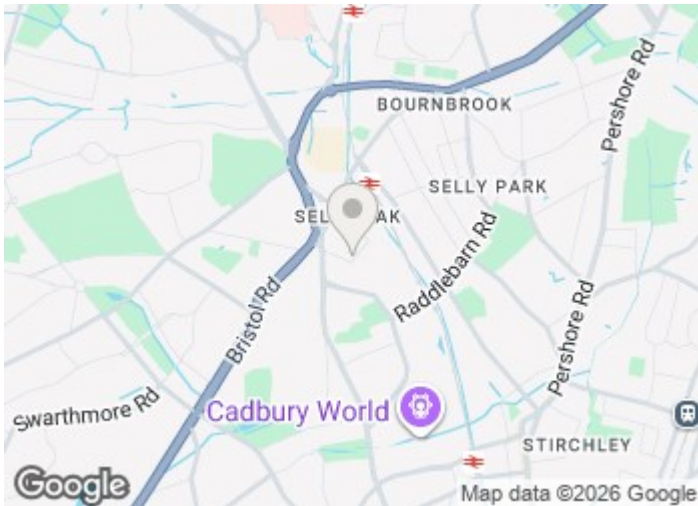
Term: 12 months

Deposit: £461.20 per person

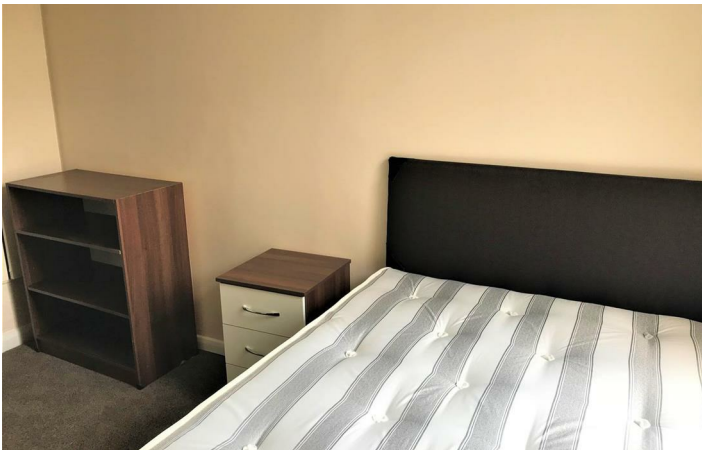
£1,999 Per Month

68 Gleave Road

Birmingham, B29 6JR

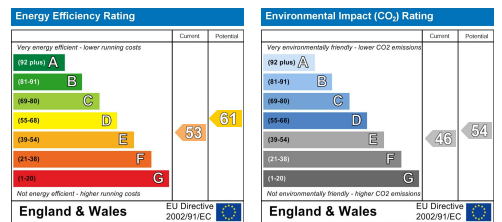


[Directions](#)



Floor Plan

These particulars, whilst believed to be accurate are set out as a general outline only for guidance and do not constitute any part of an offer or contract. Intending purchasers should not rely on them as statements of representation of fact, but must satisfy themselves by inspection or otherwise as to their accuracy. No person in this firm's employment has the authority to make or give any representation or warranty in respect of the property.



543 Bristol Road, Selly Oak, Birmingham B29 6AU. T: 0121 472 3331 Website: www.direct-housing.co.uk
 E-mail: sellyoak@direct-housing.co.uk lettings@direct-housing.co.uk accounts@direct-housing.co.uk

